

# NAVIENT MATE

## Installation Guide

EQM580

The **balance sensor** is at the bottom of the heating unit. Do not place the heating unit on an uneven surface or on the carpet. The balance sensor may trigger and it may not operate.

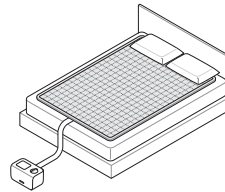
The heating unit is set to turn off automatically after 15 consecutive hours of operation.

- ✓ There may be residual water in the heating unit due to factory testing. Please be assured that the unit is not a used product or defective.
- ✓ Use of clean water (distilled water, purified water, mineral water) is recommended.
- ✓ There might be a particular odor the mat cover when you open the box. It will disappear over time and it is harmless so you can use it with confidence.
- ✓ Regular use of sterilization mode is recommended for more pleasant use.
- ✓ After 90 seconds of non operation, the heating unit goes into power saving mode. Touch any button to resume control.

## Product Installation Guide

- 1** After deciding the location to place the mattress pad, insert pad inside the cover then close.

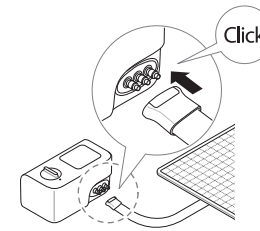
Do not place the heating unit on uneven or soft carpeted area.



\*It is recommended to place the heating unit at the same level as the pad.

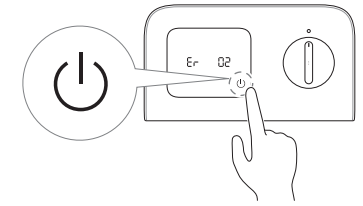
- 2** Push the pad hose connector into the heating unit until it clicks.

If it is difficult to insert the connector, wet the o-ring to allow for a smoother insertion.

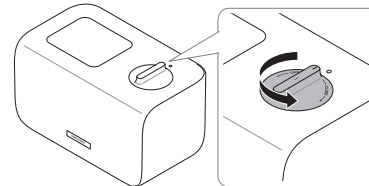


- 3** Connect the power cord and press the power button to turn on the heating unit.

Water shortage error code (E-02) will be displayed when turned on for the first time.

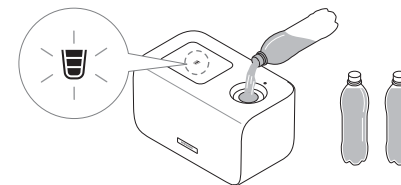


- 4** Open the water inlet cap by turning it counterclockwise.



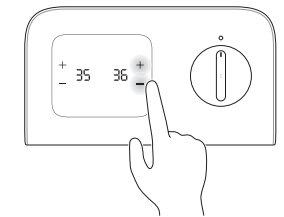
- 5** Check the water level indicator light and slowly add water as needed.

Pour in the water slowly and repeat 2-3 times.



\* The amount of water to be filled is approximately 1,500ml for King size, 1,350ml for Queen size, 1,050ml for Single size.

- 6** Touch the "+" or "-" button to set the desired temperature



## Setting the temperature above 100°F

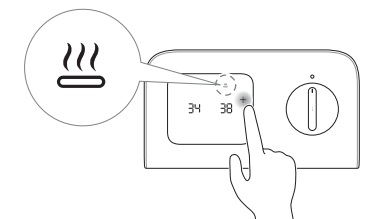
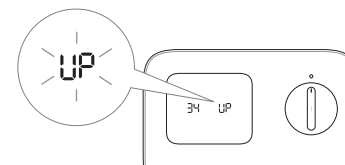
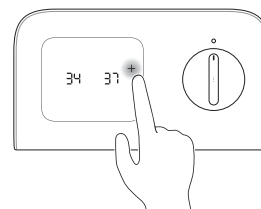
When the "+" button is pressed to set the temperature above 99°F(37°C), "UP" will be displayed.



Release the button and wait for a brief moment, the UP indicator and the high temperature caution lamp will blink. (For about 1.5 seconds)



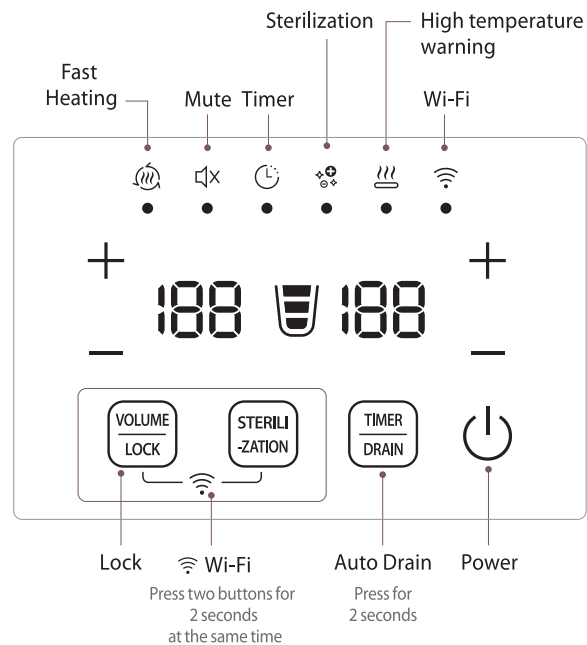
Pressing the + button after the brief moment will allow the temperature to be set above 100°F.



# NAVIENT MATE

## Use / Care Guide

EQM580

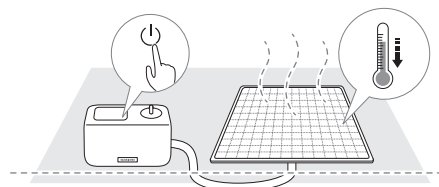


**Caution** | Make sure that the water has sufficiently cooled before draining to prevent risk of burn.

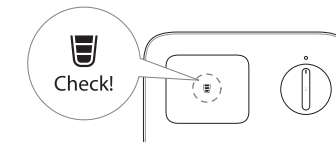
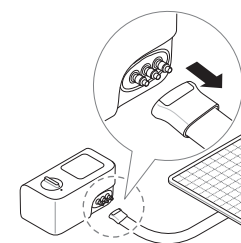
### Setting the Auto Drain Mode

- 1 Turn off the heating unit and let the water cool down. Put the heating unit and mattress pad on the floor and detach the hose from the heating unit.
- 2 Prepare a bucket to receive water and press the quick connector to remove the heating unit and mattress pad.
- 3 Fill the heating unit with water and close the water inlet tightly.

If the mattress pad is above the heating unit, water may overflow.

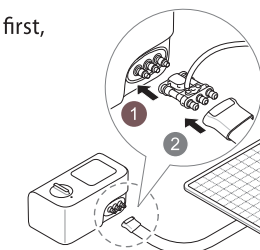
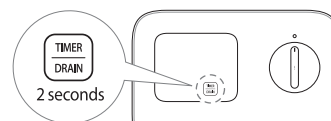


Be careful of any leaking water drops from the connectors.

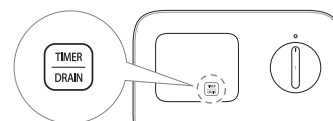


- 4 Turn on the heating unit and touch the drain button for 2 seconds.
- 5 Follow the voice guidance to connect the auto drain kit between the heating unit and the hose connector of the mattress pad.

Connect the auto drain kit to the heating unit first, then to the mattress pad.

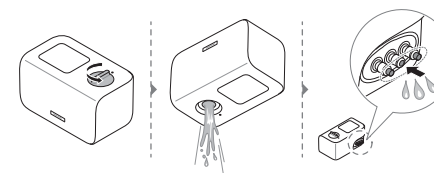


- 6 After connecting the auto drain kit, touch the drain button again.
- 7 After the auto drain mode is fully completed, remove the remaining residual water from the heating unit and mattress pad by following the diagrams.

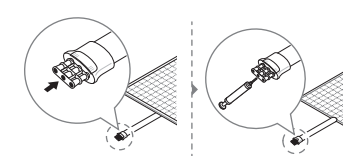


After 3 seconds, water draining will start.

[heating unit section]



[Mattress pad section]



※ Even after the auto drain, there may be residual water left in the mattress pad depending on the usage environment. This is not a malfunction of the product, and you can use the included air pump and water removal kit to remove the residual water.